

# Outdoor recreation activities- Demand

## General description:

The local recreation demand was mapped using the location of beneficiaries of recreational opportunities as an indicator, including both residents and tourists. Thus, we quantified the local recreation demand based on the number of residents and tourists, using national census data and occupancy rates of tourist accommodation establishments at the municipality level. The following explanations are partly cited from Schirpke et al. (2017)<sup>1</sup>.

## Input Data

- National Census data
- Occupancy rates of tourist accommodation

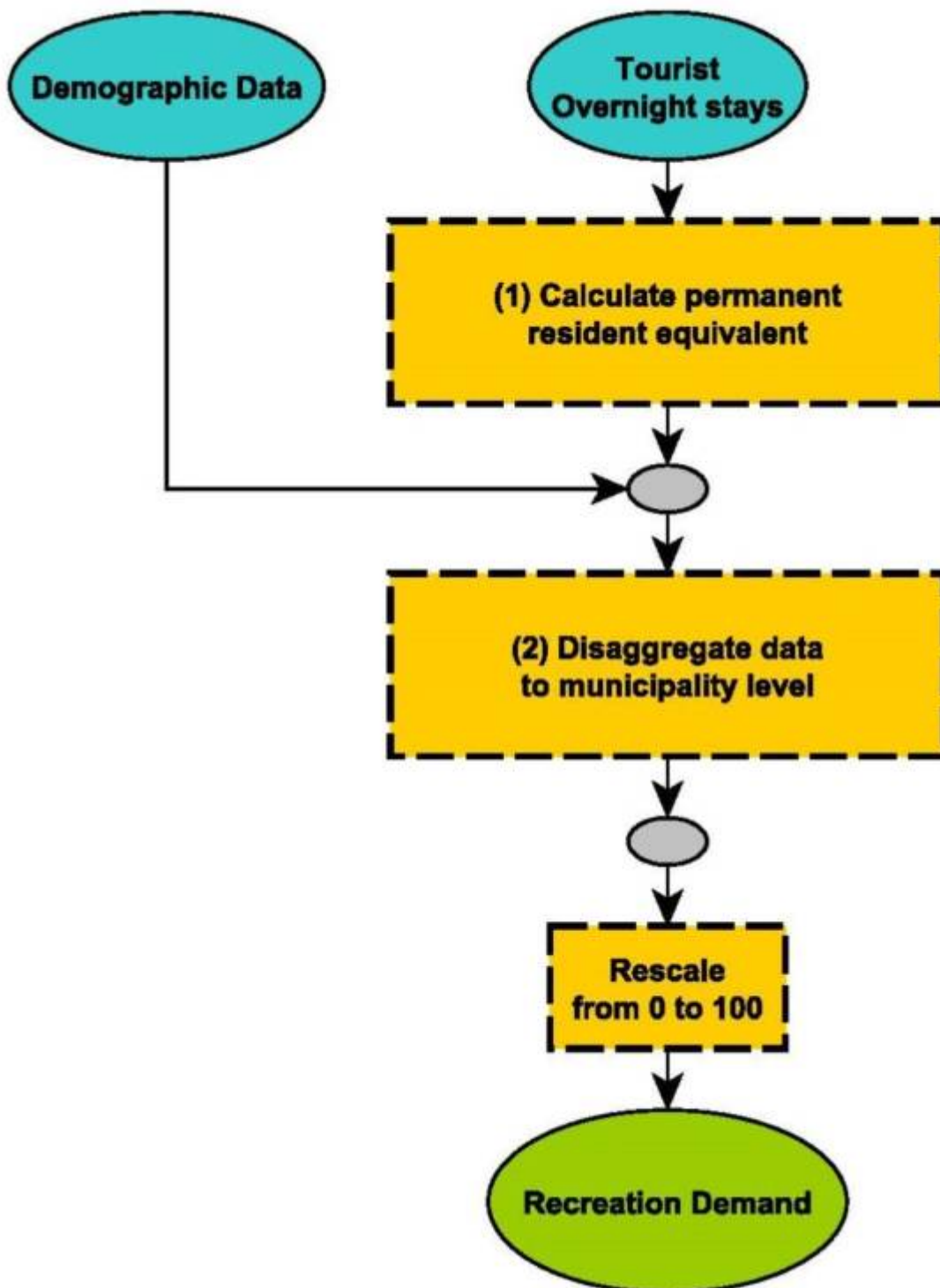
## Calculation processes:

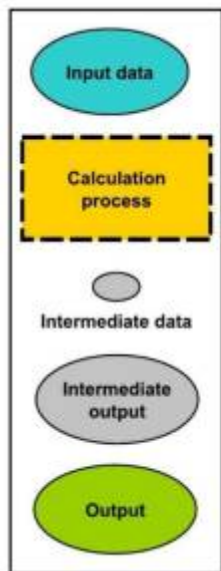
### (1) Calculate permanent resident equivalent

Tourism occupancy rates were converted into a 'permanent resident equivalent' by dividing the number of nights by 365 and added to the number of residents, representing the number of people that might daily benefit from recreational opportunities.

### (2) Disaggregate data to municipality level

Next, the density per municipality is calculated and the demand rescaled from 0 (low) to 100 (high) to compare it with recreation supply and flow.





**Input data**→ elements that hold a value or a reference to data stored on disk. It is usually a spatial explicit information coming from official sources.

**Calculation process**→ the actual operation performed on the data. The number preceding the item refers to the number in the model description.

**Intermediate data**→ for each calculation process intermediate data is generated. This data, however, is usually not significant itself, but is used as an input for the next calculation step.

**Intermediate output**→ is intermediate data that has a significance for the ES evaluation.

**Output**→ is the result of the calculation process. It is typically one of the ES indicators, either Supply, Demand or Flow.

<sup>1</sup>Schirpke, U., Meisch, C., Marsoner, T., Tappeiner, U., 2017. Revealing spatial and temporal patterns of outdoor recreation in the European Alps and their surroundings. Ecosystem Services, doi: 10.1016/j.ecoser.2017.11.017.

From:

<http://www.wikialps.eu/> - **WIKIALps - the Alpine WIKI**

Permanent link:

<http://www.wikialps.eu/doku.php?id=wiki:beneficiaries>

Last update: **2018/07/18 12:13**

